



LINKED LEARNING CONVENTION | ANAHEIM, CA | FEB. 12-14

Opportunity Youth Need Linked Learning, Too



Terry Grobe
Director Youth Pathways
Jobs for the Future



Kim McNulty
VP Regional Strategy
OneFuture Coachella Valley



#LinkedLearning | #LLCON2018

ABOUT JFF



Our Mission

Jobs for the Future (JFF) works to ensure that all lower-income young people and workers have the skills and credentials needed to succeed in our economy.



Our Vision

The promise of education and economic mobility in American is achieved for everyone.

ABOUT OneFUTURE COACHELLA VALLEY

Our Mission

To assure all students succeed in college, career and life – expanding and enhancing the local workforce so that our youth and economy thrive.



OBJECTIVES FOR THIS SESSION

- Use Five-Part Framework to explore youth-focused work inclusive of Opportunity Youth
- Learn about Local/National Innovations
- Link to resources, including two national pathway models that imbed Linked Learning principals in design/delivery
- Share additional innovations and challenges



JOY INCENTIVE FUND 5-PART FRAMEWORK

1. **Collaborating** for Impact
2. Building **Effective Pathways**
3. Using **Data** to Guide Decisions and Assess Impact
4. **Leveraging Funding** to support and sustain innovation
5. Developing/Utilizing **Effective Policy**

Regional Work

COACHELLA VALLEY

Collaborating for Impact: Regional Plan

5 strategic outcomes

Increase high school graduation rates

Increase college readiness

Increase college completion and attainment of degrees and certificates

Increase career readiness

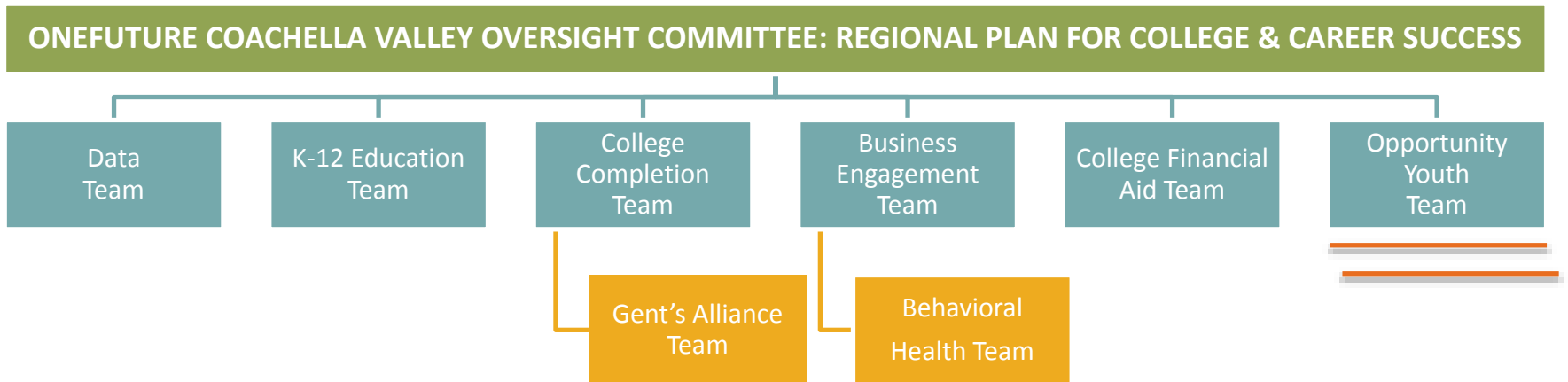
Place local students in higher-wage jobs



#LinkedLearning | #LLCON2018

COACHELLA VALLEY

Collaborating for Impact: Our Structure



Industry Councils

Advanced Technology Industry Council
Arts, Media, Entertainment Industry Council
Healthcare Industry Council

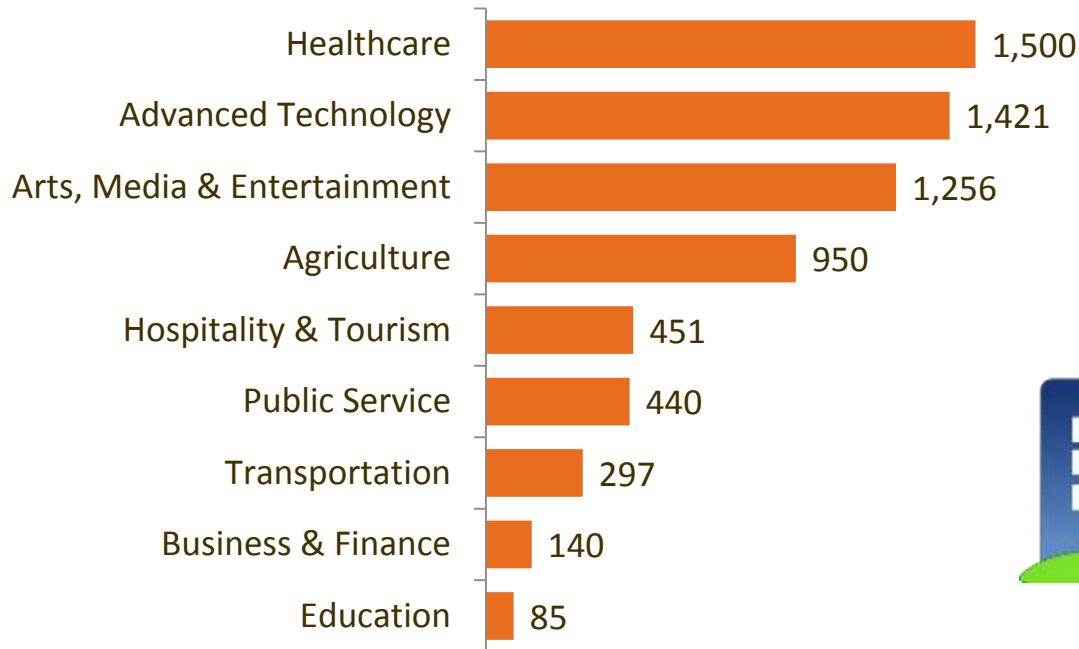
Healthcare Industry Council Work Groups:

Nutrition, Physical Therapy, Dental, Pharmacy,
Physician, Nursing, Health & Medical Innovation,
Emerging Health Professionals

COACHELLA VALLEY

Building Effective Pathways

NUMBER OF HIGH SCHOOL CAREER ACADEMY OR PATHWAYS STUDENTS IN EACH SECTOR



30 CAREER ACADEMIES AND **17** PATHWAY PROGRAMS SERVING **6,500+** HIGH SCHOOL STUDENTS IN 2017

UP FROM **5** CAREER ACADEMIES SERVING **600+** IN 2005

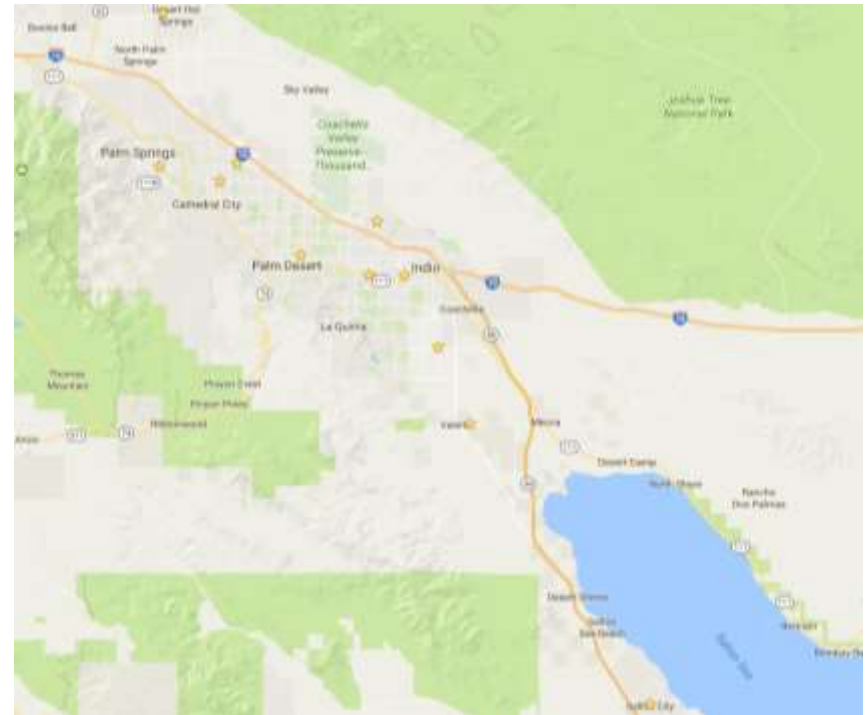


*Note: Overall count for CVUSD adjust down by 10% due to issues with double counting among some academies.
Source: 2017-18 district data*

COACHELLA VALLEY

Building Effective Pathways: High School Career Pathways

- ■ ■ Agriculture and Natural Resources
- ■ ■ ■ ■ Arts, Media, Entertainment
- ■ Business and Finance
- ■ Education
- ■ ■ Energy and Utilities
- ■ ■ ■ ■ Engineering and Architecture
- ■ ■ ■ ■ Information and Communication Technologies
- ■ ■ ■ ■ Health Science and Medical Technology
- ■ ■ Hospitality and Tourism
- ■ Manufacturing
- ■ ■ ■ ■ Public Services
- ■ ■ ■ ■ Transportation



COACHELLA VALLEY

Building Effective Pathways: Workforce Education

- **Riverside County EDA/Workforce + College of the Desert**
 - Solar Installer: 400 trained (2009-2012)
 - Green Pathways = Green Paydays
 - Study guides for academic elements of NABCEP certifications
 - Reading, Mechanical Reasoning, Algebra focus – Classroom
 - Hands-on training
 - Strong Workforce Initiative (2017)
 - Makers Space Initiative
 - Apprenticeships
 - Installations with Grid Alternatives
 - Logistics

COACHELLA VALLEY

Data Driven Decision Making: 2013 Study

Riverside–San Bernardino metro area, one of the fastest-growing areas of California over the past decade, is now **home to one in every nine Californians**. It is comprised of Riverside County and San Bernardino County. The **youth disconnection** rate in the Inland Empire is 18.8 percent, or nearly **one in five**; an alarming 117,000 of the roughly 620,000 teens and young adults in the 16 to 24 year old age range are not engaged with either school or work. **This is the highest rate of youth disconnection among the country’s most populous twenty-five metro areas.”**

<http://www.measureofamerica.org/halve-the-gap-2030/>

COACHELLA VALLEY

Data Driven Decision Making: OYYA A-Team Tactical Plan

Vision

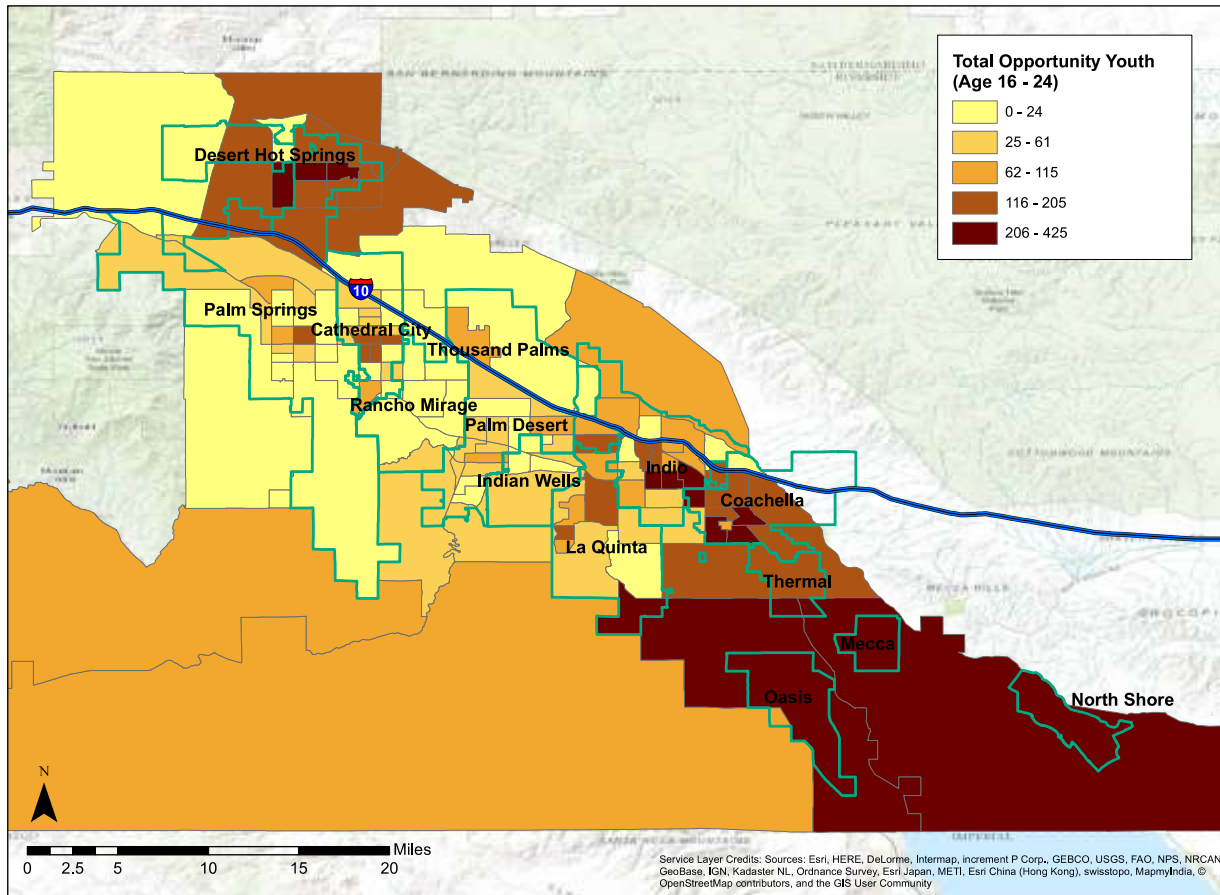
To empower young adults by helping them discover relevant and accessible opportunities and support networks that allow them to be successful in their educational and workforce pursuits while addressing the causes of disconnection.

Strategy

Significantly reduce the number of long-term unemployed and disconnected young adults and other groups that lack access to the workforce.

COACHELLA VALLEY

Data Driven Decision Making: USC Sol Price Data



COACHELLA VALLEY

Data Driven Decision Making: Challenge and Solution

- **Modeled data** - sample may not be large enough for our region to show progress on outcomes
- Mobilizing local providers to capture a more accurate **local snapshot**
- Tactical Plan Priorities:
 - Partnership Alignments
 - Data Analysis – **establish baselines** of the OYYA population and geographies

COACHELLA VALLEY

Leveraging Funding

- **Aligned Foundation Support**
 - The James Irvine Foundation, College Futures Foundation, The California Endowment, Desert Healthcare District, Regional Access Project
- **Districts: LCAP Funding Alignment**
- **Riverside County EDA/Workforce: WIOA Funding**
- **Community College: Strong Workforce**

COACHELLA VALLEY

Utilizing Effective Policy

- **Linked Learning** in California

National Work

Collaboration

- **25 Communities**
 - Differing Backbones
 - Range of Partners

Building Effective Pathways

- **OPP**
 - Manufacturing Academy
- **Santa Clara**
 - Reengagement Network
- **Seattle**
 - Bridge and PSE Support System

Data Driven Decision Making

- **Hartford**
 - WIOA partners all use ETO

Utilizing Effective Policy

- **Seattle**
 - Use of WA Open Doors policy in Seattle to support reengagement programs

Back on Track Model

Enriched Preparation

Integrates high-quality college/career-ready instruction with strong academic and social supports



Postsecondary Bridging

Builds college/career-ready skills and provides informed transition counseling



First Year Support and Beyond

Offers appropriate supports to ensure postsecondary persistence and career success

BOT: Career Next

PHASE ONE: On-Ramps

PURPOSE: To provide the skills and knowledge required for occupational training.

PHASE TWO: Employer-Driven Training

PURPOSE: To ensure student success in attaining the training and credentials required for entry into career-track employment with adequate starting salaries.

PHASE THREE: Career-Track Employment in In-Demand Occupations (Post-Placement Support)

PURPOSE: To ensure success of youth in first employment and reduce turn-over.

RESOURCES

- <https://www.onefuturecv.org>
- <https://aspencommunitysolutions.org/opportunity-youth-incentive-fund-overview/>
- <http://www.jff.org/initiatives/back-track-designs>
- <http://www.jff.org/initiatives/back-track-designs/opportunity-works>
- <http://www.aecf.org/work/economic-opportunity/work-education-and-income/learn-and-earn-to-achieve-potential/>
- <https://nationalfund.org/learning-evaluation/publications/connecting-youth-to-skills/>

EXIT TICKET

- *Leaving today's workshop, what is one specific action you want to take with your organization or partners back home?*



THANK YOU!

- TERRY GROBE
 - tgrobe@jff.org
 - Tel: 617/728-4446
- KRISTA SABADOS
 - ksabados@jff.org
 - Tel: 617/728-4446
- KIM McNULTY
 - kim@onefuturecv.org
 - 760/413-5990

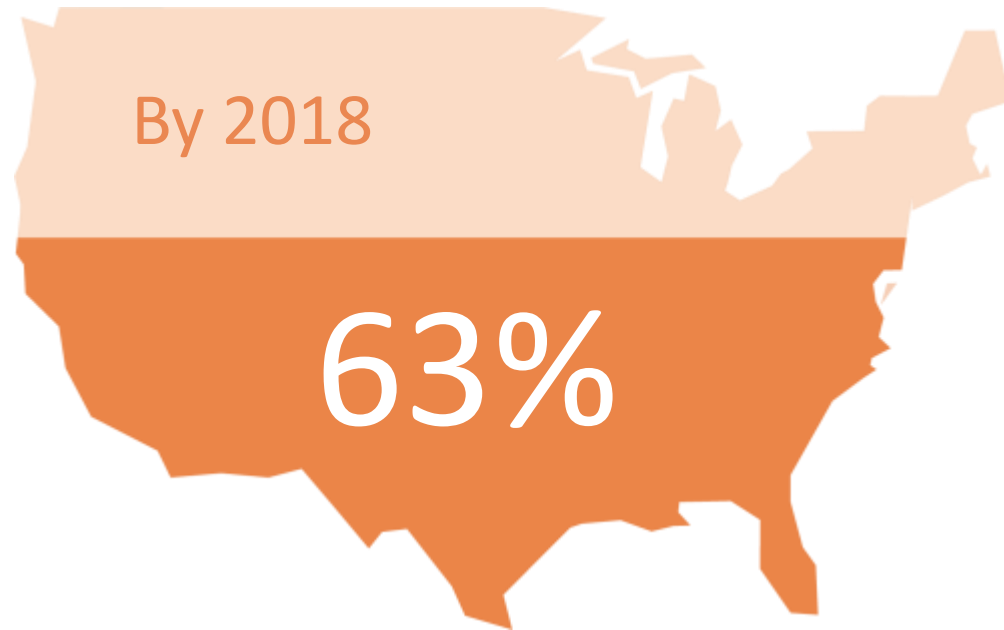
WHY LINKED LEARNING

California high school students who do not graduate in four years.

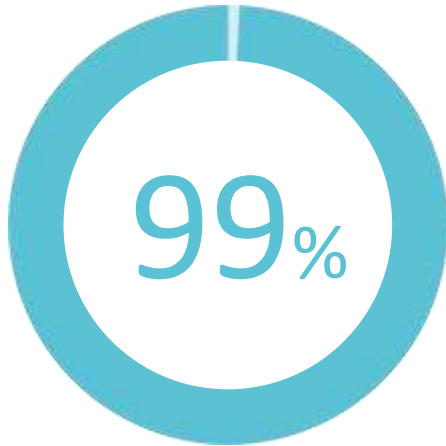


609,000

California youth, ages 16 to 24, are currently neither in school nor working.



of all jobs in the U.S. will require some education beyond high school



Of jobs created in post-great recession U.S. have gone to workers with some postsecondary education.

INCLUSIVE OF MANY MODELS



NAF Academies
Career Academies
CA Partnership Academies
Career Pathways
Small Schools
Charter Schools
P-TECH
District-Wide Strategy
Ford NGL

THE FOUR COMPONENTS

Linked Learning pathways prepare students for college, career, and life by integrating four core components:



+



+



+



Rigorous
Academics

Career
Technical
Training

Work-
based
Learning

Comprehensive
Support
Services

STUDENTS GAIN CAREER AND LIFE SKILLS

Percentage point differences between Linked Learning students and comparison students.



COLLABORATION

- +20 Achieve a shared goal
- +21 Working with people
- +22 Present to a group



PROFESSIONALISM

- +20 Expectations for behavior
- +22 Create a resume
- +12 Responsible or work quality



MINDSET

- +8 Set goals for school success
- +16 Can learn hard content
- +10 Can reach goals

THE LINKED LEARNING ADVANTAGE

Linked Learning students demonstrated increased academic success in high school.



+5.3

More likely to graduate high school*

+8.9

More credits earned by the end of high school



+0.9

More college preparatory semester courses

+5.3

More likely to be classified as ready or conditionally ready for college in English Language Arts*

*in percentage points



LINKED LEARNING CONVENTION | ANAHEIM, CA | FEB. 12-14

Thank you!

[Linkedlearning.org](https://linkedlearning.org)