



LINKED LEARNING CONVENTION | ANAHEIM, CA | FEB. 12-14

# Better Together!

Learning, Creating and Implementing a Regional Collaborative



#LinkedLearning | #LLCON2018

# OUR REGION

## TULARE & KINGS COUNTIES



# 12,000

9-14 students in the  
Tulare Kings region  
involved in Linked  
Learning pathways

# OUR ANCHOR TEAM

## Education Intermediary

**Lori Morton,**

[Lori.Morton@tcoe.org](mailto:Lori.Morton@tcoe.org)

Tulare County Office of Education  
Career Pathways Engagement Manager

**Joy Soares,**

[Joy.Soares@tcoe.org](mailto:Joy.Soares@tcoe.org)

Tulare County Office of Education  
College + Career Director  
TK Director

## Workforce Intermediary

**Jennie Bautista,**

[jbautista@tularewib.org](mailto:jbautista@tularewib.org)

Tulare County Workforce Investment Board  
Innovate TK  
Business Services Manager

**Randy Wallace,**

[randyw@networks2action.com](mailto:randyw@networks2action.com)

Networks2Action  
Consultant

# Transitioning from a “grant funded consortia” to a **regional partnership**

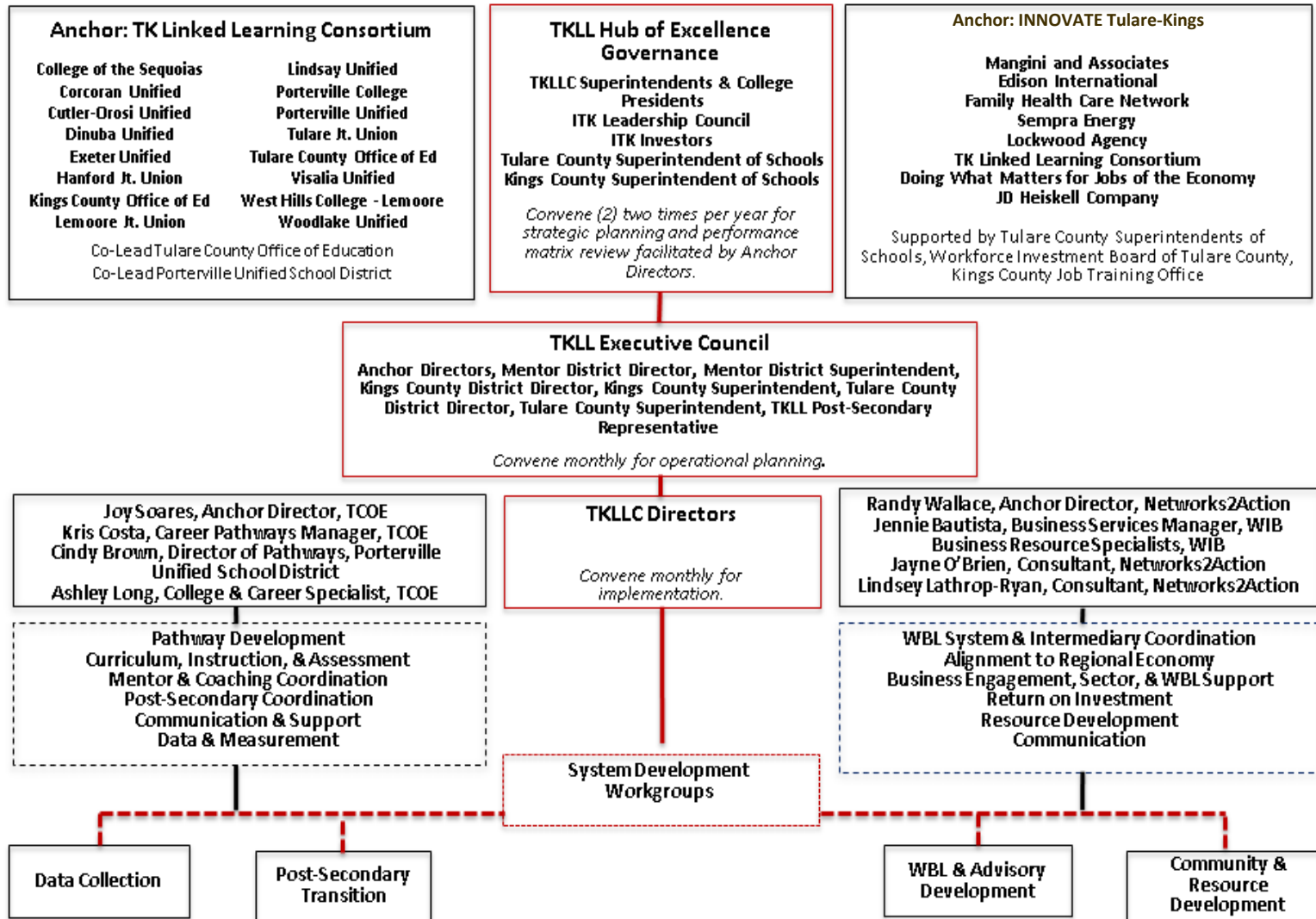
# COLLABORATIVE PRINCIPLES

- Create a safe environment for organizations to productively collaborate
- Balance advocacy of own ideas and genuine inquiry of others
- Check assumptions and support ideas with evidence

# 2017-18 OUTCOMES

- Create and sustain a strong multi-sector collaborative with a high level of participation
- Develop a three year strategic plan 2018-2021 with multi-sector input and leadership
- Bring additional resources of support to the region through the collaborative

# 2014-17 Grant-Funded Structure



# 2017-18 TK Collaborative

## *Transitional Year of Planning*

### Steering Council

**Member District Superintendents (4), Regional/Workforce Industry Partners (4),  
Member College Presidents (3)**

***Regional Convener: Tulare County Office of Education (2)***

***Regional Workforce Intermediary: INNOVATE (2)***

### Regional Workgroups

*designed to interact regularly to implement regional strategies and move TK Collaborative mission & goals forward*

**High Quality Pathway Development      Data Integration      Resource Development      WBL & Advisory Development**

### Communities of Practice (CoP)

*groups which share a common practice and interact regularly to learn together about it*

**Work Based Learning Coordinators      Sector Specific Educators      Director/Dean      ITK Champions Network      Coaches**

### Sector Partners +500 Industry Partners

**Alpaugh Unified  
Burton Unified  
Corcoran Unified  
Cutler-Orosi Unified  
Dinuba Unified  
Exeter Unified  
Farmersville Unified**

**College of the Sequoias  
Reedley College  
West Hills College  
Lemoore  
Kings County Office of  
Education**

**Tulare County WIB  
INNOVATE T-K  
Kings County Job  
Training Office  
Tulare County Office of  
Education**

**Hanford Joint Union HS  
Lemoore Joint Union  
Lindsay Unified  
Tulare Joint Union HS  
Visalia Unified  
Woodlake Unified**



# WHY A STEERING COUNCIL?

- Senior Management to lead and drive the regional priorities
- Structure for the transition Inform regional definitions and make recommendations

# ROLE OF THE STEERING COUNCIL

- Provide strategic direction and goals for TK Collaborative regional priorities
- Inform regional definitions and make recommendations
- Facilitate accountability of regional priorities of TK Collaborative
- Employ a data-based decision making process

# DISCUSSION OVERVIEW

College +  
Career  
Readiness

Linked  
Learning &  
High Quality  
Career  
Pathways

TK  
Collaborative  
Structure

# COLLEGE + CAREER READINESS

**Core Belief: All students must be ready to succeed when they transition to post-secondary education, career training, or the workforce.**

## **Priorities**

- Enhance and expand college and career readiness experiences for all students.
- Identify and expand successful strategies for ensuring students transition to post-secondary without a need for remediation.
- Enhance and expand early college strategies.

PRE-SCHOOL TO POST-SECONDARY AWARENESS EXPLORATION READINESS

# COLLEGE AND CAREER DESIGN IDEAS CONTINUUM

Building student's college and career **AWARENESS** develops foundational knowledge and skills to learn about post-secondary and the world of work. **EXPLORATION** of college and career requirements and options will support motivation and inform decision making. Application of learning through experiences will further develop knowledge and skills to provide **READINESS** for enrollment in post-secondary and employment.

**AWARENESS**

- Pre-School**
- Awareness of Self
  - Brain Development Focus
  - Shoreline Play
  - High Quality Early Learning
  - Life of Work Portray
  - Parent / Career Engagement
  - Active Living Readiness Activities
  - Student Support Services
  - Support to English Learners
  - Social Emotional Development Focus
  - Strong Literacy and Learning Focus
  - Take Your Son and Daughter to Work Day

**AWARENESS**

- TK - 2<sup>nd</sup>**
- Awareness of Self
  - Social Emotional Development Focus
  - California State Standards Proficiency Level
  - College and Career Awareness
  - College and Career
  - Personal Goal Setting
  - College and Career Mindset
  - Onsite a College and Career School Culture and Climate
  - Service Learning
  - Student Support Services
  - Support to English Learners
- Learning About College**
- College ARS
  - College Personal / Self- & Assessment
  - How to be a Scholar
  - Parent Engagement Post Secondary
- Learning About Career**
- Building the Dream Curriculum
  - Career Display Boards
  - Connecting Helper Speakers
  - Take Your Son and Daughter to Work Day
  - Parent Engagement / Career
  - Career Themed Literature

**AWARENESS**

- 3<sup>rd</sup> - 5<sup>th</sup>**
- Awareness of Self
  - Reading and Applications
  - Social Emotional Development Focus
  - California State Standards Proficiency Level
  - College and Career Awareness
  - College and Career
  - Personal Goal Setting
  - College & Career Portfolio
  - College and Career Mindset
  - Onsite a College and Career School Culture and Climate
  - Career School Culture and Climate
  - Service Learning
  - Student Support Services
  - Support to English Learners
- Learning About College**
- High Quality Personal Stories
  - College Personal / Self- & Assessment
  - How to be a Scholar
- Learning About Career**
- Building the Dream Curriculum
  - Career Display Boards
  - Career Themed Literature
  - College & Career Portfolios Development
  - Take Your Son and Daughter to Work Day

**AWARENESS**

- 6<sup>th</sup> - 8<sup>th</sup>**
- Awareness of Self
  - Social Emotional Development Focus
  - California State Standards Proficiency Level
  - College and Career Awareness
  - College and Career
  - Personal Goal Setting
  - College and Career Mindset
  - College & Career Portfolio
  - Onsite a College and Career School Culture and Climate
  - Service Learning
  - Student Support Services
  - Support to English Learners
- Learning About College**
- High Quality Personal Stories
  - College Personal / Self- & Assessment
  - How to be a Scholar
- Learning About Career**
- Building the Dream Curriculum
  - Career Display Boards
  - Career Themed Literature
  - College & Career Portfolios Development
  - Take Your Son and Daughter to Work Day

**AWARENESS**

- 9<sup>th</sup> - 10<sup>th</sup>**
- Awareness of Self
  - Social Emotional Development Focus
  - California State Standards Proficiency Level
  - College and Career Awareness
  - College and Career
  - Personal Goal Setting
  - College and Career Mindset
  - College & Career Portfolio
  - Onsite a College and Career School Culture and Climate
  - Service Learning
  - Student Support Services
  - Support to English Learners
- Learning About College**
- College Career on Campus
  - College Expo
  - College Night
  - College Representative Presentations
  - College Visits
  - Parent Engagement - Post Secondary
  - New HSAT to Work Skills
- Learning About Career**
- Career Awareness - Student Interest
  - Career Awareness - Career Discovery
  - Career Interest Inventories
  - Career Day
  - College & Career Portfolio Development
  - Guest Speakers in a Variety of Industries
  - Industry Workshops for Job Application Training
  - Job Fair - Industry Partners
  - Take Your Son and Daughter to Work Day
  - Minor of Work Skills

**AWARENESS**

- 11<sup>th</sup> - 12<sup>th</sup>**
- Awareness of Self
  - Social Emotional Development Focus
  - California State Standards Proficiency Level
  - College and Career Awareness
  - College and Career
  - Personal Goal Setting
  - College and Career Mindset
  - College & Career Portfolio
  - Onsite a College and Career School Culture and Climate
  - Service Learning
  - Student Support Services
  - Support to English Learners
- Learning About College**
- College Career on Campus
  - College Expo
  - College Night
  - College Representative Presentations
  - College Visits
  - Parent Engagement - Post Secondary
  - New HSAT to Work Skills
- Learning About Career**
- Career Awareness - Student Interest
  - Career Awareness - Career Discovery
  - Career Interest Inventories
  - Career Day
  - College & Career Portfolio Development
  - Guest Speakers in a Variety of Industries
  - Industry Workshops for Job Application Training
  - Job Fair - Industry Partners
  - Take Your Son and Daughter to Work Day
  - Minor of Work Skills

**Post-Secondary**

- Graduate with 3-12 Units of College Credits
- Competencies Necessary to Enter College Level - Math and English
- Interned Declared Major
- Completion of Student Education Plan and Ability to Write a S, A, C
- Completed Required courses for Post-Secondary Outlets

## DISTRICT GRADUATE OUTCOMES

**Character**

**Citizenship**

**Collaboration**

**Communication**

**Creativity**

**Critical Thinking**

**Tulare County Office of Education**  
 Committed to Students, Support and Service  
**Project Partners:**  
 Cedar Crest Unified School District  
 Dinuba Unified School District  
 Woodlake Unified School District



## TK COLLEGE + CAREER COLLABORATIVE

Participation in these Tulare County Office Of Education events will build college and career skills to enhance each student's personal portfolio:

- A Night at the 21st Century Museum
- Academic Decathlon
- Anti-Tobacco Challenge Bowl
- Arbor Day
- Battle of the Books - Reading Revolution
- Battle of the Books Middle School
- Battle of the Books Upper Elementary
- Cardboard Challenge
- Civil War Time Travelers
- College and Career Expo
- College Night
- Cowboy Poetry
- CyberQuest
- Dia de los Ninos/Dia de los Libros
- Expanding Your Horizons
- FIRST LEGO League
- Foundations for Life
- INTERCONNECT
- Lip Sync Battle
- Math Super Bowl
- Mock Trial
- NHD - Tulare County
- Physics Day
- Poetry and Prose
- Remembering the Holocaust
- Robotics Exhibition
- Science Olympiad Div A
- Science Olympiad Div B/C
- Slick Rock Student Film Festival
- Spelling Championship
- STEM Expo
- Theater Company Productions
- Tulare County Technology Challenge
- Young Artist's Best of Show
- Young Author's Faire

Image adaptation from © 2015 Copyright, New Pedagogies for Deep Learning

# LINKED LEARNING & HIGH QUALITY CAREER PATHWAYS

**Core Belief: Linked Learning and high quality career pathways are K-12 and post-secondary strategies to further develop the talent pipeline for the region.**

## **Priorities**

- Enhance and expand Linked Learning and other high quality pathways.
- Improve and measure successful transitions for Linked Learning and Career Pathways students to post-secondary.
- Increase the quality and effectiveness (capacity, quality, and efficiency) of industry engagement in advisory boards and work based learning.



Technology Engineering Public Safety

Agriculture Health Business Art

2016-2017

<b>Enrollment</b> Grades 9-12	
ALL	
#	
Linked Learning	Other
#	#

<b>Graduation Rate</b>	
ALL	
%	
Linked Learning	Other
%	%

<b>Chronic Absenteeism</b>	
ALL	
%	
Linked Learning	Other
%	%

<b>Suspension Rate</b>	
ALL	
%	
Linked Learning	Other
%	%

<b>11th Grade Math</b>	
"Met or Exceeds Standards" on CAASPP MATH	
All	
%	
Linked Learning	Other
%	%
EAP-Math College Ready	
All	
%	
Linked Learning	Other
%	%



<b>11th Grade ELA</b>	
"Met or Exceeds Standards" on CAASPP ELA	
All	
%	
Linked Learning	Other
%	%
EAP-ELA College Ready	
All	
%	
Linked Learning	Other
%	%

# TK COLLABORATIVE STRUCTURE

**Core Belief: Tulare-Kings partners are better together and will thrive by committing to regional strategies and shared vision.**

## **Priorities**

- During the transitional year, create a recommendation and plan for our regional collaborative
- Consider impact on our current regional commitments (CCPT 1, CCPT 2, JFF)
- Provide leadership, strategic direction and regional definitions and recommendations



## Success For All.

The Tulare Kings Linked Learning Hub of Excellence is in transition from a grant-funded consortium to a partnership collaborative. Our goal is to increase the number of and demand for Linked Learning graduates while in turn, collectively impacting our region by strengthening leadership, developing robust partnerships, and building systems that help our youth move seamlessly and successfully from high school to college and into the workforce. After all, research has shown us that Linked Learning students have higher rates of engagement and graduation than their peers in traditional high schools. We believe that our investment in building sustainable relationships and an innovative network will yield significant returns for our students in the Tulare Kings Region.

This initiative was funded with our California Career Pathways Trust initiative.

### Core Beliefs

TK partners have a rich history of collaboration, responding to education, workforce and economic priorities of the region. Organizations are committed to aligning career pathways and industry partnerships to better prepare our region for economic success.

#### A Solution for All

All students must be ready to succeed when they transition to post-secondary education, career training and the workforce.

#### Talent Pipeline

Linked Learning and high quality career pathways are K-12 and post-secondary strategies to further develop the talent pipeline for the region.

#### A Shared Vision

Tulare Kings partners are better together and thrive by committing to regional strategies and shared vision.



### Scaling Regionally

Partners are using Linked Learning experiences to endorse a shared set of core beliefs. Initial success continues to inspire other high quality pathway development.

Tulare County  
Office of Education

Jim Walsh, County Superintendent of Schools

*"TK [Collaborative] is making a significant difference in our collective ability to lead, grow and improve our region."*

— Thad Russell, Dean  
College of the Sequoias

*"We are awed and impressed by everything you all continue to push forward."*

— Marty Alvarado, Director  
Jobs for the Future

# COMMITMENT TO THE FUTURE

## **Strengthen & Scale Industry Partnerships**

*High Quality Industry Engagement*

*WBL Experiences for K-12 and Community College Students*

*Increase Quality and Quantity of Business Partnerships*

*Develop Certifications with Business Partners*

## **Increase Post-Secondary Participation & Success**

*Successful Transitions*

*Articulation & Dual Enrollment*

*Reduced Remediation*

## **Endorse Shared Outcomes**

*All Partners Connected Through Common Outcomes*

*Higher Ed Completion*

*CTE Pathway Completion*

## **Implement Shared Operational Structures**

*Common Definitions and Understanding*

*Using Resources Effectively*

*Data Sharing*

*Intentional Systems*

*Communication, Collaboration, and Accountability*

## **Define & Align Effective Practices for High Quality Pathways**

*Define High Quality and Number of HQ Pathways*

*Measure the Impact of HQ Pathways*

*Growth in Quality and Quantity of Pathways*



LINKED LEARNING CONVENTION | ANAHEIM, CA | FEB. 12-14

**Any Questions?**  
**Any Comments?**



#LinkedLearning | #LLCON2018



THE TULARE KINGS TEAM

Thank you for  
joining us!